

Deadline for registration: 24<sup>th</sup> July 2012



# Waste-to-Energy Energy & Resource Efficiency



## 6<sup>th</sup> CEWEP Congress 2012

Würzburg Fortress  
© Maritim Hotel Würzburg

## 6-7 September 2012

**Venue**  
Maritim Hotel Würzburg  
Pleichertorstraße 5  
97070 Würzburg  
Germany

Celebrating

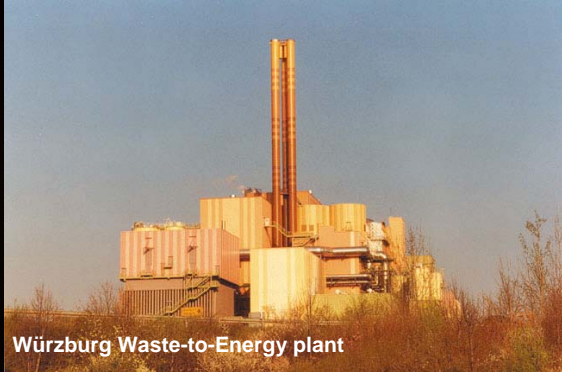
**1**  *Years*  
2002-2012

In cooperation with

**ITAD**

Confederation of European Waste-to-Energy Plants

[info@cewep.eu](mailto:info@cewep.eu) ▶ [www.cewep.eu](http://www.cewep.eu)



Würzburg Waste-to-Energy plant

Bottom ash  
© Indaver

# Programme

Thursday 6 September 2012

8:30 Welcome coffee and registration - Room Frankonia

9:00

## Congress

Opening words by Ferdinand Kleppmann, CEWEP President

Welcome words by :  
Georg Rosenthal, Mayor of Würzburg

**Address** by the German Environment Minister TBC

## 10 years' momentum in Waste-to-Energy - high-lights

Ferdinand Kleppmann and Dr. Ella Stengler, CEWEP Managing Director

### Venue:

Maritim Hotel Würzburg  
Pleichertorstraße 5  
97070 Würzburg  
Germany

## Waste-to-Energy: Energy & Resource Efficiency

### Policy Session

9:45

#### View from the European Parliament

Dr. Anja Weisgerber, MEP (EPP - Germany)

#### Key Note Speech - View from the European Commission

Karl Falkenberg Director General, European Commission DG Environment

#### View from a European Member State - Germany

Dr. Helge Wendenburg, German Ministry of the Environment

Chair - Ferdinand Kleppmann,  
CEWEP President

10:45 - 11:15 *Coffee Break*

## Waste-to-Energy & Energy Efficiency

11:15

#### Energy Supply from Waste-to-Energy in the future - the impact of the EU Energy Efficiency Directive

Carsten Stäblein, chairman of board of Management, E.ON Energy From Waste AG

11:45

#### CEWEP Energy Efficiency Report - 2012 edition

Dr. Ing. Dieter O. Reimann, CEWEP Scientific and Technical Advisor

12:15

#### Good Practice:

#### How to improve Energy Efficiency in Waste-to-Energy Plants

Examples from

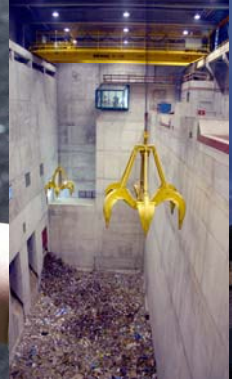
Germany - Carsten Spohn, ITAD

The Netherlands - Dick Spanjaard from Attero/VA

12:45 - 13:45 *Lunch*

Chair - Håkan Rylander,  
CEWEP Deputy President,  
Avfall Sverige, Sweden





Würzburg Residenz  
© Bayerische Schlösserverwaltung/ Konrad Rainer



Cooling in Vienna  
© Ferwärme Wien/ Christian Houdek

Thursday 6 September 2012

## Waste-to-Energy & Resource Efficiency

13:45 **Metal Recycling from bottom ash**  
Prof. Rüdiger Deike, University of Duisburg-Essen

**CEWEP LCA study on Sustainable European Waste Systems**  
Prof. Thomas Christensen, Technical University of Denmark

Chair - Jan Manders,  
CEWEP Deputy President,  
Vereniging Afvalbedrijven,  
The Netherlands

## Best Available Techniques (BAT)

14:45 **Revision of the BREFs Waste Treatment & Waste Incineration**  
Markus Gleis, German Federal Environment Agency (UBA)

**Co-siting of Anaerobic Digestion and Waste-to-Energy**  
Prof. Peter Quicker, RWTH Aachen

Chair - Daniele Fortini,  
CEWEP Deputy President,  
Federambiente, Italy

15:45 - 16:15 *Coffee Break*

## Global Developments in Waste-to-Energy

16:15 **Fuels from waste: Market development**  
Bert Straetmans, President of ERFO/Sita Belgium

**Capacity development of Waste-to-Energy in Europe and worldwide**  
Ivan Christiaens, General Manager of Keppel Seghers Belgium

Chair - Luc Valaize,  
CEWEP Deputy President,  
SVDU, France

## Architecture in Waste-to-Energy

17:15 Bettina Kamuk/Jørgen Haukohl, Ramboll

Some closing words by Ferdinand Kleppmann, CEWEP's President

18:00 End of the CEWEP congress

### Who should attend?

Decision makers on the European and national levels, national authorities, Waste-to-Energy Plant owners and operators, national and European associations, suppliers of Waste-to-Energy technology, engineers, scientists and other academics, as well as other interested stakeholders.

*Representatives from the EU institutions, national ministries and local decision makers can attend the congress free of charge.*





Würzburg Residenz Garden Hall  
© Bayerische Schloßerverwaltung/ Achim Bunz



Würzburg Waste-to-Energy plant



Rokoko Castle and Garden  
© Bayerische Schloßerverwaltung

**Wednesday 5 September 2012**

Sponsored by **ITAD**

**Welcome Dinner**

- 19:00 Meet in the lobby of the Maritim Hotel Würzburg  
Walk together to the Residenz, Frankonia Fountain at Residenzplatz
- 19:30 Aperitif in the Residenz' Stückfasskeller (wine cellar)
- 20:00 CEWEP Welcome Dinner

*As the wine cellar is kept at 14°C, please wear warm clothing.*

**Thursday 6 September 2012**

**Gala Dinner & Celebration of CEWEP's 10<sup>th</sup> Birthday**

- 19:00 Meet in the lobby of the Maritim Hotel Würzburg  
Walk together to the Residenz Würzburg

Ferdinand Kleppmann will lead a visit of the picturesque staircase of the Würzburg Residenz, which is a UNESCO World Heritage site.

- 19:30 **CEWEP Gala Dinner & Celebration of 10 years of CEWEP - representing Waste-to-Energy at the European level**

In the magnificent Garden Hall of the Würzburg Residenz.

*The Gala Dinner will be "black tie"*



**Friday 7 September 2012**

**Technical Visit - to the Würzburg Waste-to-Energy Plant**

- 9:30 Meet in the lobby of the Hotel Maritim Würzburg to go by bus to the Waste-to-Energy Plant, Gattinger Str. 31, D-97076 Würzburg

Visit of the plant and bus transfer back to the Maritim Würzburg hotel and the Würzburg railway station

- 12:00 Estimated arrival time

The *Zweckverband Abfallwirtschaft Raum Würzburg (ZVAWS)* treats the waste of about 930,000 people from its members: the city of Würzburg, the counties of Würzburg and Kitzingen as well as other surrounding counties.

In 2010 the Waste-to-Energy Plant in Würzburg treated 212,600 tonnes of waste and sewage sludge. From this 91.5 million kWh of electricity and 39.7 million kWh of district heating was fed into the electricity and district heating network.

[www.zvaws.de](http://www.zvaws.de)



**Thursday 6 September 2012**

**Partner programme**

- 9:30 A guide will meet the participants in the lobby of the Hotel Maritim Würzburg
- 10:00 Departure by boat from Würzburg to the city of Veitshöchheim
- 11:00 Visit of the Rokoko Castle and Garden  
<http://www.schloesser.bayern.de/deutsch/schloss/objekte/veitsho.htm>
- 12:30 Lunch in Restaurant Rokoko
- 14:40 Return by boat to Würzburg

**Partner Programme fee**

Accompanying partners will be charged a fee of **€80**.

*This includes the boat trip to Veitshöchheim, entrance to the Rokoko Castle and Garden and lunch on 6 September, as well as joining the congress Welcome Dinner and the Gala Dinner. Partners may also join the technical visit on 7 September.*



**Würzburg Residenz**  
© Bayerische Schlösserverwaltung/ Konrad Rainer



**Cooling in Vienna**  
© Fernwärme Wien/ Christian Houdek

## Organisational details

### Congress Venue

Maritim Hotel Würzburg  
Pleichertorstraße 5  
97070 Würzburg  
Germany

Tel: +49 (0) 931 30 53-0  
Fax: +49 (0) 931 30 53-900  
[info.wur@maritim.de](mailto:info.wur@maritim.de)  
[www.maritim.de](http://www.maritim.de)

### Hotel

A hotel option has been arranged in the Maritim Hotel Würzburg.

#### Rates:

Single room: **€130** per night including buffet breakfast  
Double room: **€180** per night including buffet breakfast

Hotel option closing date: **24<sup>th</sup> July 2012**

Please make your hotel booking using the **Hotel reservation form** that can be downloaded from our website.

[www.cewep.eu](http://www.cewep.eu)

### How to get to the Congress?

**Frankfurt airport** (ca. 120 km)

ICE (express train) station at the airport, direct connection to Würzburg (1 hour 30 minutes)  
<http://www.bahn.com/i/view/GBR/en/index.shtml>

**Nuremberg airport** (ca. 100 km)

1) Subway to Nuremberg central station  
[http://www.airport-nuernberg.de/150602/Public\\_Transportation](http://www.airport-nuernberg.de/150602/Public_Transportation)

2) ICE (express train) connection to Würzburg (1 hour) <http://www.bahn.com/i/view/GBR/en/index.shtml>

*Simultaneous translation will be available - English/German and German/English*



### Confederation of European Waste-to-Energy Plants

*CEWEP is the umbrella association of the owners and operators of Waste-to-Energy Plants across Europe. They thermally treat household and similar waste that remains after waste prevention, reuse and recycling by generating energy from it. This is how they replace fossil fuels, such as coal, gas and oil, used by conventional power plants. At the same time Waste-to-Energy Plants help to reduce greenhouse gas emissions by diverting waste from landfills.*

*From Waste-to-Energy bottom ash metals can be extracted and recycled into new products, e.g. aluminium castings, and minerals can be used as secondary aggregates, e.g. in road construction or in building products.*

*This is how Waste-to-Energy Plants contribute to Europe's resource efficiency, by using unavoidable waste as a valuable resource wherever possible.*

**Waste-to-Energy ▶  
creating reliable, cost-effective, local energy  
from citizens' waste**

[www.cewep.eu](http://www.cewep.eu)



### Interessengemeinschaft der Thermischen Abfallbehandlungsanlagen Deutschland e.V.

*ITAD - the German Association of Waste-to-Energy Plants - represents more than 70 Waste-to-Energy Plants treating both municipal waste and refuse derived fuel. Their members are both private and public organisations.*

*ITAD's aim is to protect the environment, by communicating the role Waste-to-Energy plays in the sustainable management of Waste, Energy and Resource Efficiency, to the general public, politicians and public authorities in Germany.*

[www.itad.de](http://www.itad.de)



## Registration form

Deadline for registration: 24<sup>th</sup> July 2012

*One registration form per Congress participant*

**First name** \_\_\_\_\_  
**Surname** \_\_\_\_\_  
**Title** \_\_\_\_\_  
**Organisation** \_\_\_\_\_  
**Address** \_\_\_\_\_  
**Town/City** \_\_\_\_\_  
**Post code** \_\_\_\_\_  
**Country** \_\_\_\_\_  
**Tel** \_\_\_\_\_  
**Fax** \_\_\_\_\_  
**E-mail** \_\_\_\_\_

**Please return to CEWEP by:**

E-mail: [info@cewep.eu](mailto:info@cewep.eu)  
 On-line: [www.cewep.eu](http://www.cewep.eu)  
 Fax: **+32 (0) 2 770 68 14**

### Registration fees

**Congress:**

The fee for attending the CEWEP Congress is **€550**.

This includes attending the Congress itself, the Welcome Dinner, the Gala Dinner, lunch, refreshments during the congress and joining the technical visit.

Please indicate participation by

- CEWEP Congress** - 6 September  
 **Welcome Dinner** - 5 September  
      My partner will also attend  
 **Gala Dinner** - 6 September - "black tie"  
      My partner will also attend  
 **Technical visit** - 7 September  
      My partner will also attend  
 Partner joining the **Partner Programme** - 6 September

Name of Partner: \_\_\_\_\_

- Special requirements e.g. vegetarian, allergies, reduced mobility, fear of heights etc.

You/your Partner (Please indicate): \_\_\_\_\_

Date: \_\_\_\_\_

Signature: \_\_\_\_\_

*Please note that representatives from the EU institutions (European Parliament, Commission and Council), national ministries and local decision makers can attend the congress free of charge.*

Please indicate

**Partner Programme:**

The fee for accompanying partners is **€80**.

This includes the boat trip to Veitshöchheim, entrance to the Rokoko Castle and Garden and lunch on 6 September, as well as joining the congress Welcome Dinner and the Gala Dinner. Partners may also join the technical visit on 7 September.

*A confirmation invoice will be sent to you as soon as we have received your registration.  
Please ensure registration fees are paid before the congress.*

**Cancellation policy:** Cancellations can be made without charge until **27<sup>th</sup> August 2012**.  
Cancellations after this date are non-refundable, but a replacement can be sent.  
For all cancellations or replacements please contact Ms. Siân Davies ([sian.davies@cewep.eu](mailto:sian.davies@cewep.eu)).